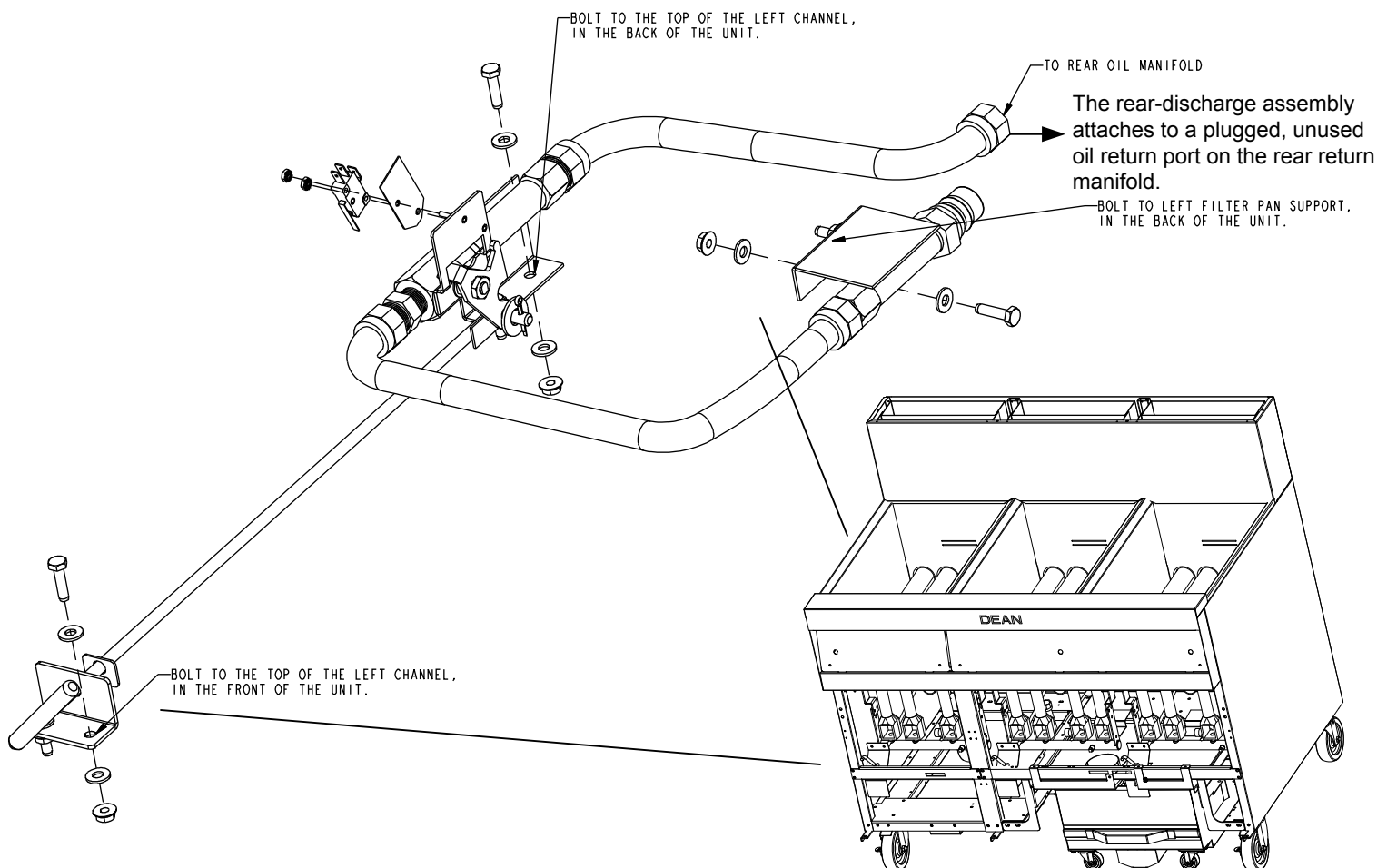


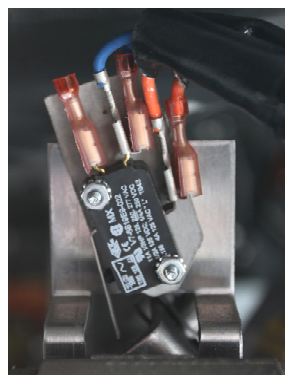
Dean FPD65 Rear Oil Discharge Kit

826-3266

This kit places a rear discharge assembly on the right side of a Dean FPD65 fryer. Follow the instructions below to install the kit.



- Remove power from the fryer and gain access to the back.
- Find the unused return manifold port (left side as viewed from the front) and remove the plug.
- Position the rear-discharge assembly inside the fryer on the left side of the filter pan (as viewed from the front) and attach as shown in the illustration above.
- Position the quick-disconnect with existing screws as shown above.
- Route the control arm from the front of the fryer to the assemblies clevis pin as shown above.
- Secure the mounting plate for the control arm to the front of the fryer.
- Daisy chain the rear discharge wiring harness to the far left microswitch, attaching the provided piggyback connections and reconnect the removed wire terminals.
- Attach sticker indicating rotation of control arm to discharge oil from the filter pan to the rear quick-disconnect.



Route the control rod for the rear discharge between the burners on the left side of the fryer. Attach the wiring harness from the rear-discharge assembly to the left most filter micro switch as shown above.